



Virginia Sweetspire

Itea virginica

Plant Description – Native, shrub, semi-evergreen, perennial

Height: 4-8 ft **Width/Spread:** 3-6 ft



Leaves

Shape: Elliptic

Arrangement: Alternate

Margin: Serrate

Form: Simple

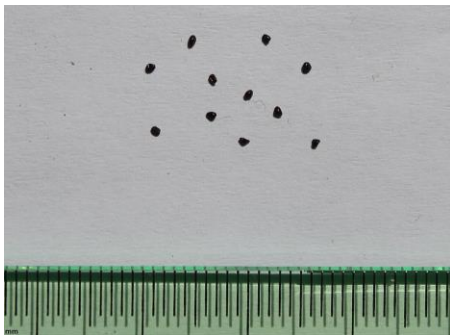
Leaf Description: Dark green; 1-4" long and 1 1/4" wide; glabrous above and can be slightly pubescent below; turn varying shades of red, orange and gold in autumn often persisting on the plants until early winter but are completely shed when temperatures fall below 15 to 20 ° F; stems can be green to dark burgundy

Flower/Bloom

Flower Color: White

Flower Shape: Stellate **In Bloom:** Mar-Jun

Flower Description: 3-6 inch long bottlebrush-like clusters of fragrant, tiny, showy white flowers with 5 petals that droop with the arching branches; flowers open from base to tip so that the plant appears to bloom for a long time; flower buds will be produced on the current season's shoots by the end of summer and will open in spring of the following year



Fruits & Seeds

Spreads via: Seeds and suckers

Seed Type: Fruit – Dry seed pod

Months in Seed: Fall

Fruit and Seed Description: The fruit is a woody, hairy, slim, cylindrical capsule about 1/3 inch long containing small, dark seeds

Ecological Benefits

Nectar source for hummingbirds, butterflies, bees, and other pollinators; seed source for birds; erosion control

Maintenance Notes

Leaves are varying shades of red, orange and gold in autumn often persisting on the plants until early winter; if pruning, do so right after flowering or in spring - prune to remove the oldest, thickest stems; Remove suckers if you want to limit its spread; prefers moist to wet soil at all times (*water three times per week*)